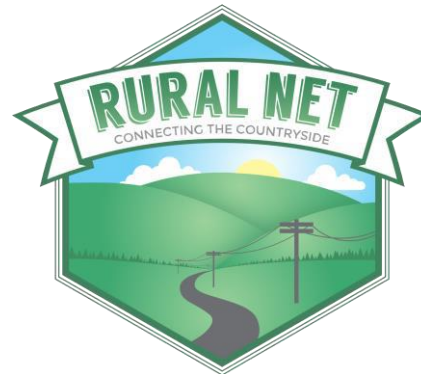




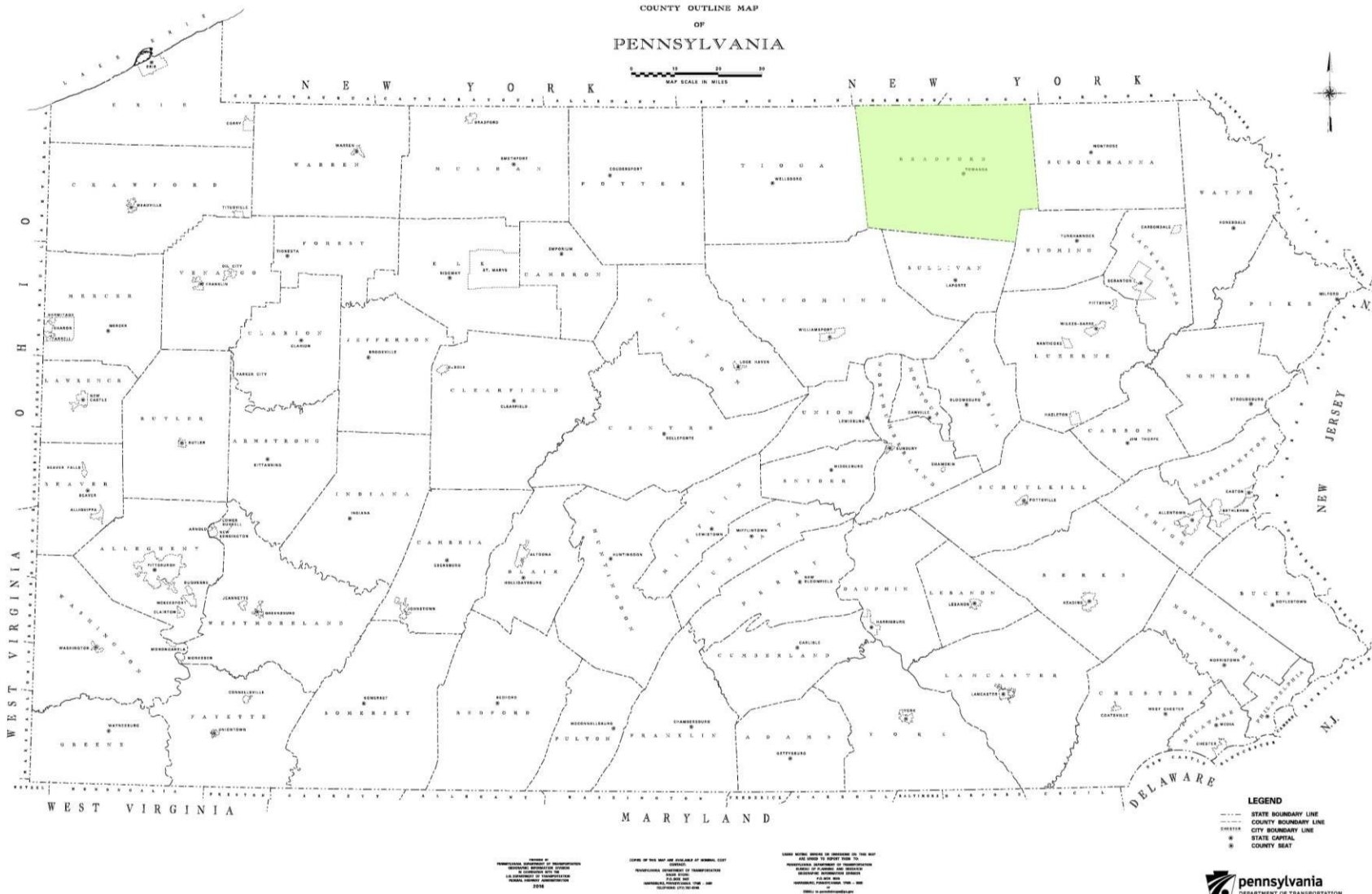
Bradford County Dark Fiber Project



GATES LAW OFFICE PLLC



Bradford County, PA

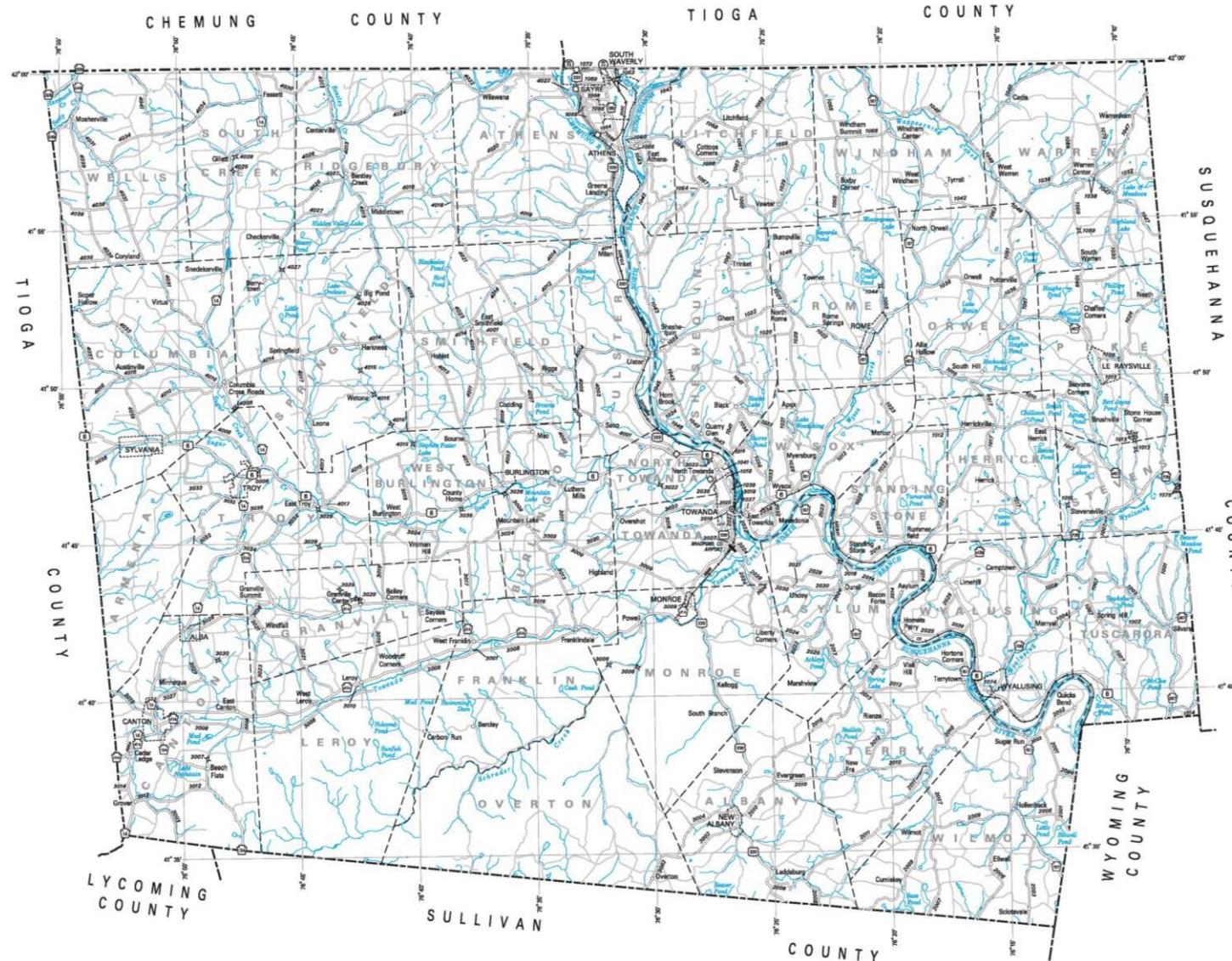


GATES LAW OFFICE PLLC

Bradford County, PA



- Population 62,622 (2010 Census)
- Area – 1,161 sq. miles
- 37 Townships
- 14 Boroughs
- 2nd Largest County (Land Mass) in PA
- 7 Public School Districts



GATES LAW OFFICE PLLC

Middle Mile/Open Access Network



MIDDLE MILE

The Middle Mile is the portion of a network that is located between where an Internet Service Provider currently is providing service and where they want to extend service.

The middle mile is often very expensive to construct with very little return on investment for the Internet Service Provider.

OPEN ACCESS NETWORK

A dark fiber network that is installed to serve as the middle mile that allows ANY Internet Service Providers to connect to it. This network is not bringing internet service to the homes. It is providing the ISP's with an alternative to building the middle mile themselves. Saving the capital that would have been devoted to building out that middle mile and utilizing it to build out lower density rural populations.



GATES LAW OFFICE PLLC

Why Fiber?



While there are many means to deploy broadband services, Fiber remains that most efficient means delivering the best speeds and most reliability. Investing in Fiber is investing in an asset that continues to change with technology. Its only limit is the electronics that are attached to the fiber.



GATES LAW OFFICE PLLC

Funding



Bradford County Act 13 Funds

- Bradford County, Pennsylvania is blessed with historic Natural Gas Reserves. Natural Gas exploration has led to the state implementing an Impact Fee that returns a portion of the production revenue to the counties where the gas is produced. These funds have paid for this middle mile network in its entirety thus far. Bradford County would not have the resources to take on this vital project if not for natural gas exploration.
- As national grant programs start to include Middle Mile Projects, the network will utilize these Act 13 Funds as match and expand the network further.



GATES LAW OFFICE PLLC

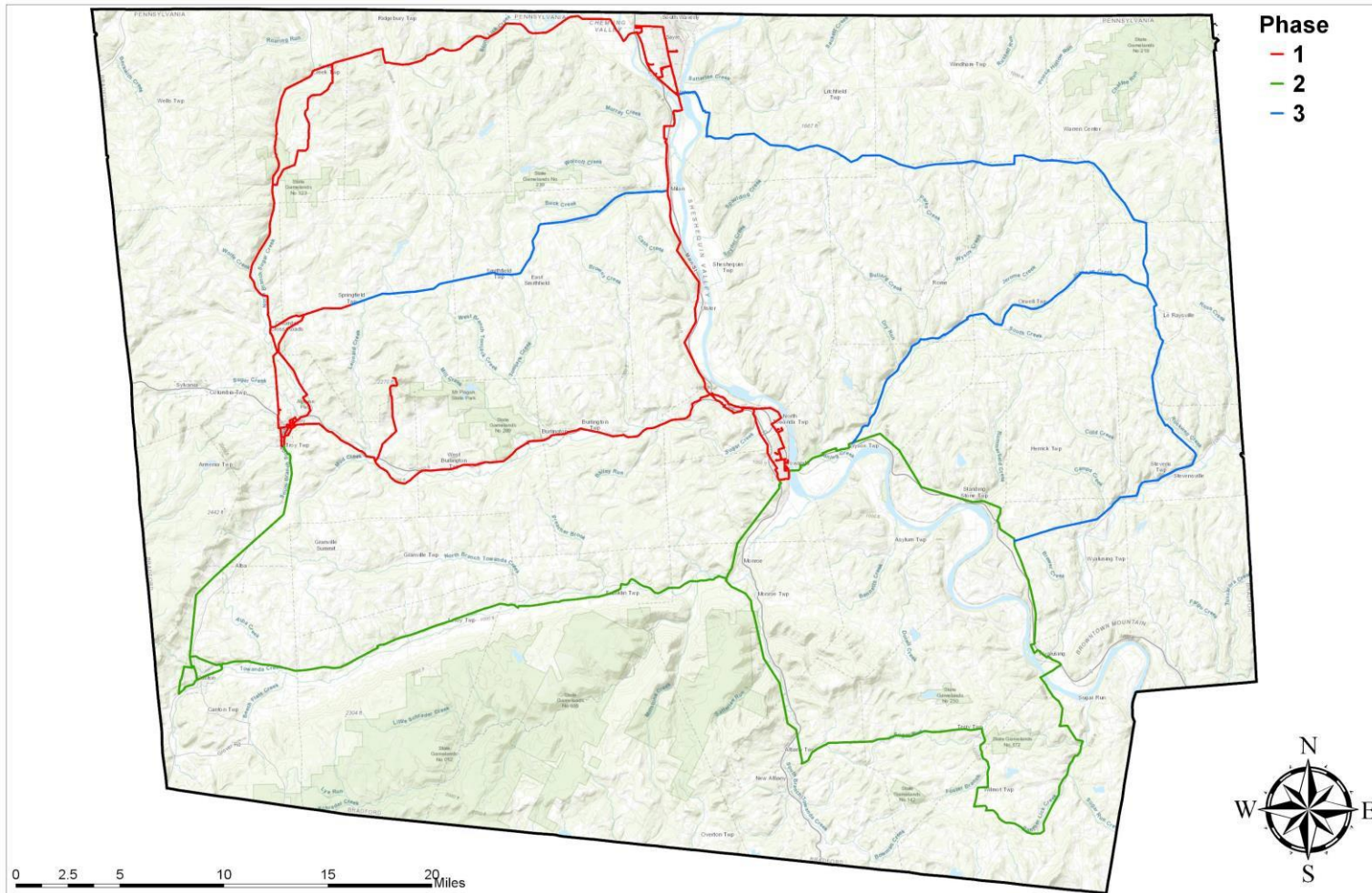
Customers

1. Internet Service Providers/Telecommunication Companies
2. Rural Electric Cooperatives
3. School Districts
4. Hospitals
5. Chain Retail Establishments
6. Municipalities



GATES LAW OFFICE PLLC

All Phases

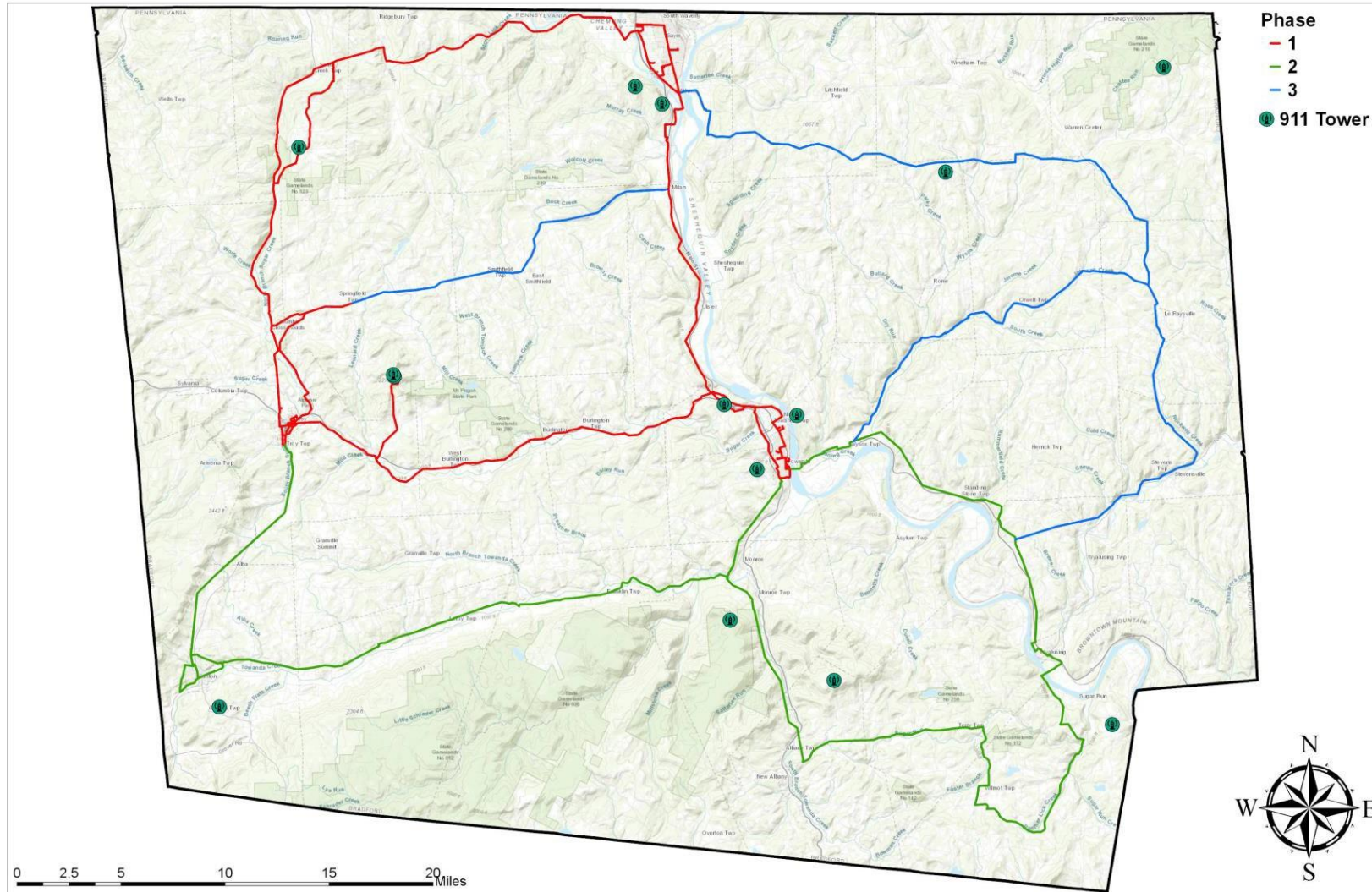


Truly
Redundant
Middle Mile
Network



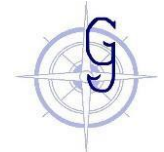
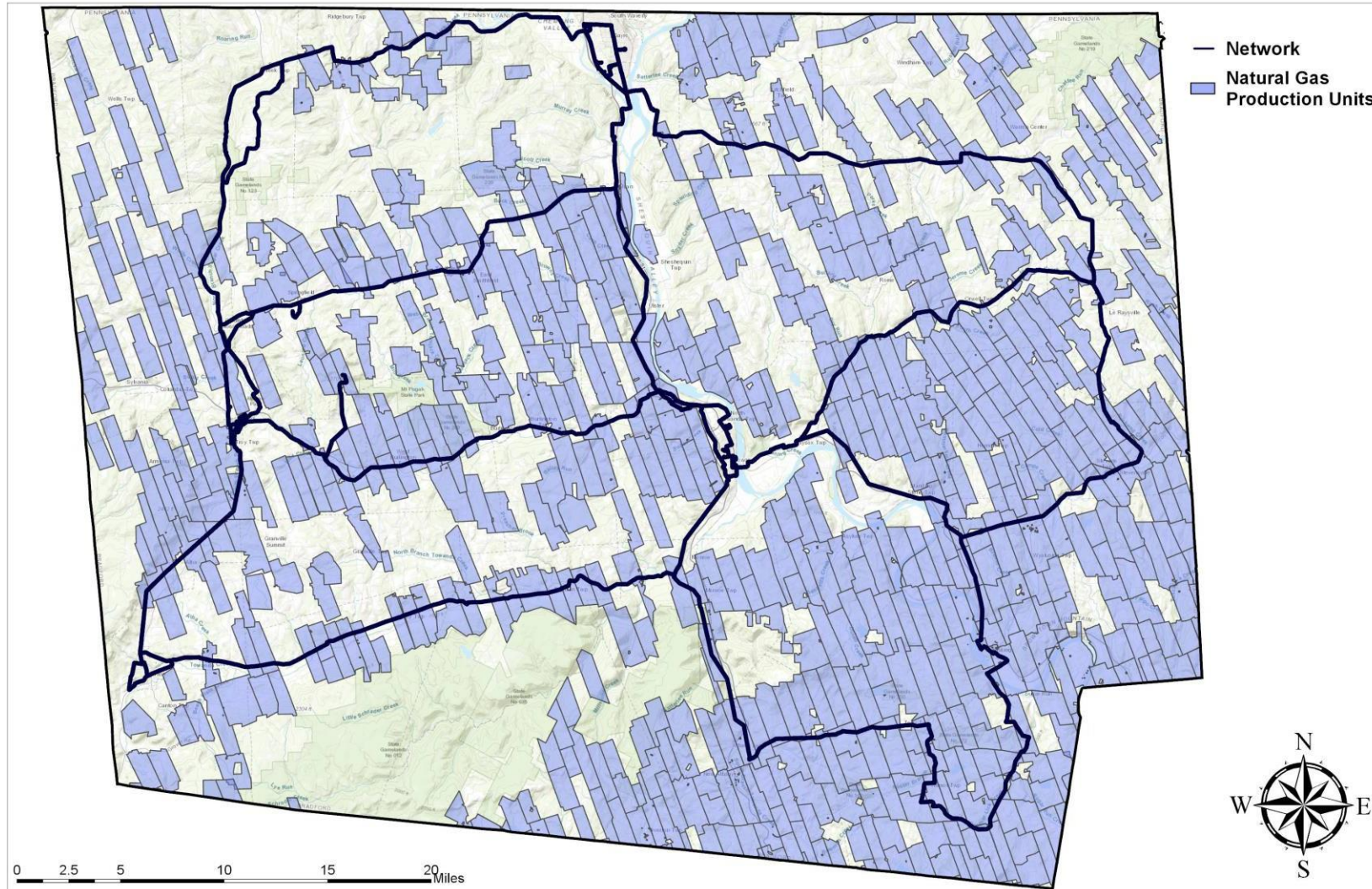
GATES LAW OFFICE PLLC

Bradford County 911 Towers



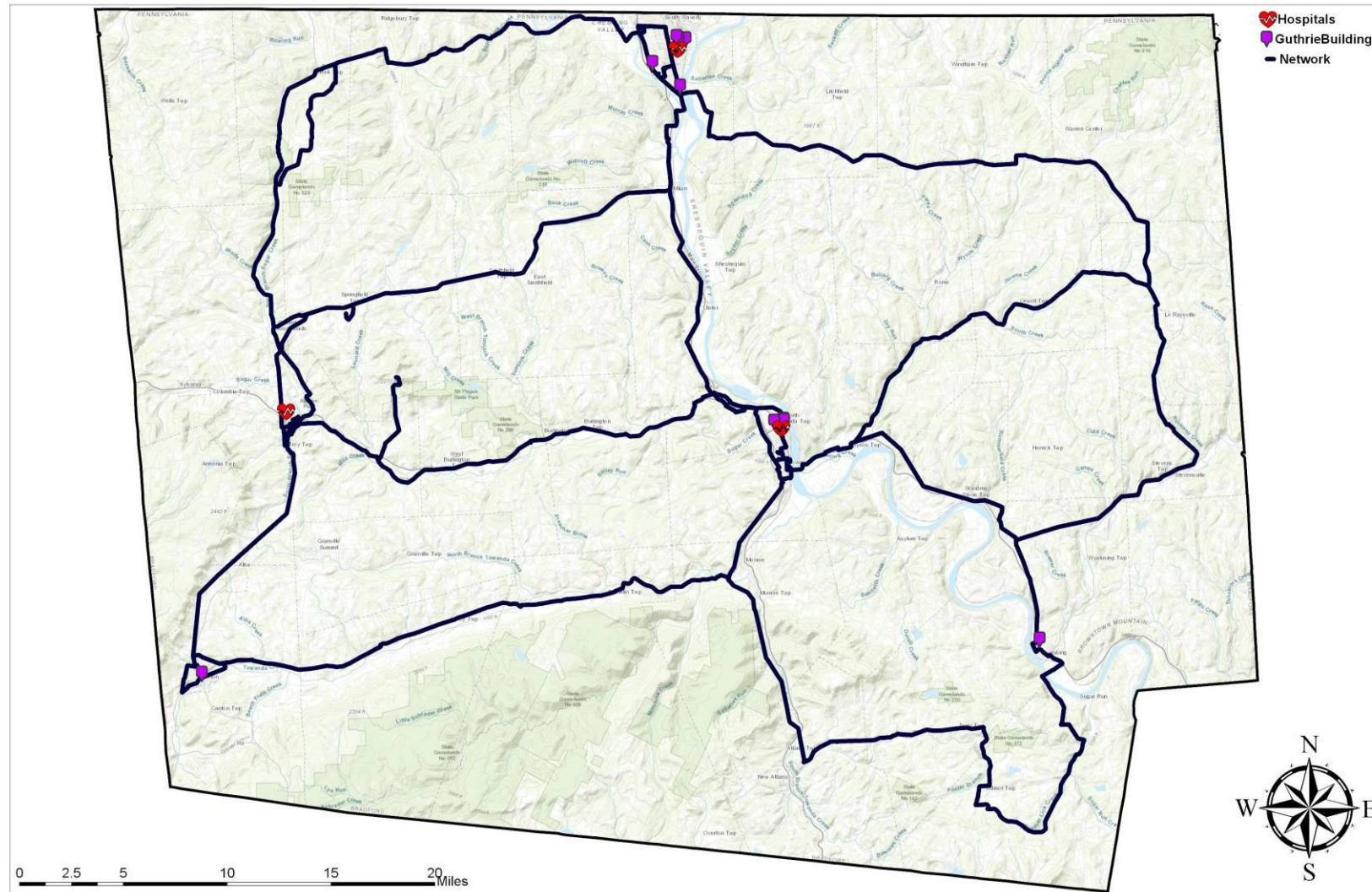
GATES LAW OFFICE PLLC

Natural Gas



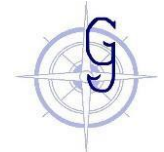
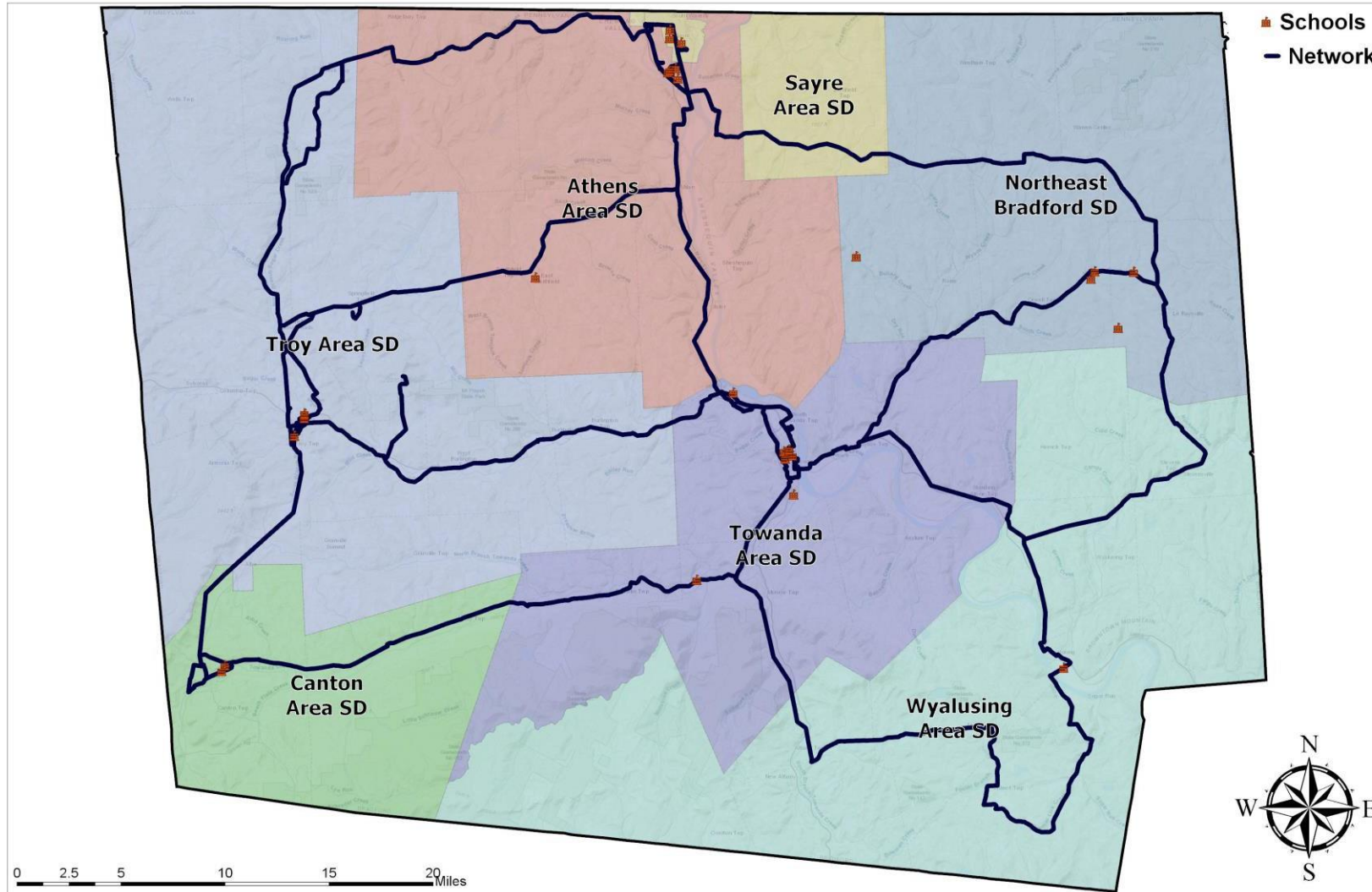
GATES LAW OFFICE PLLC

Medical – Hospitals, MOB



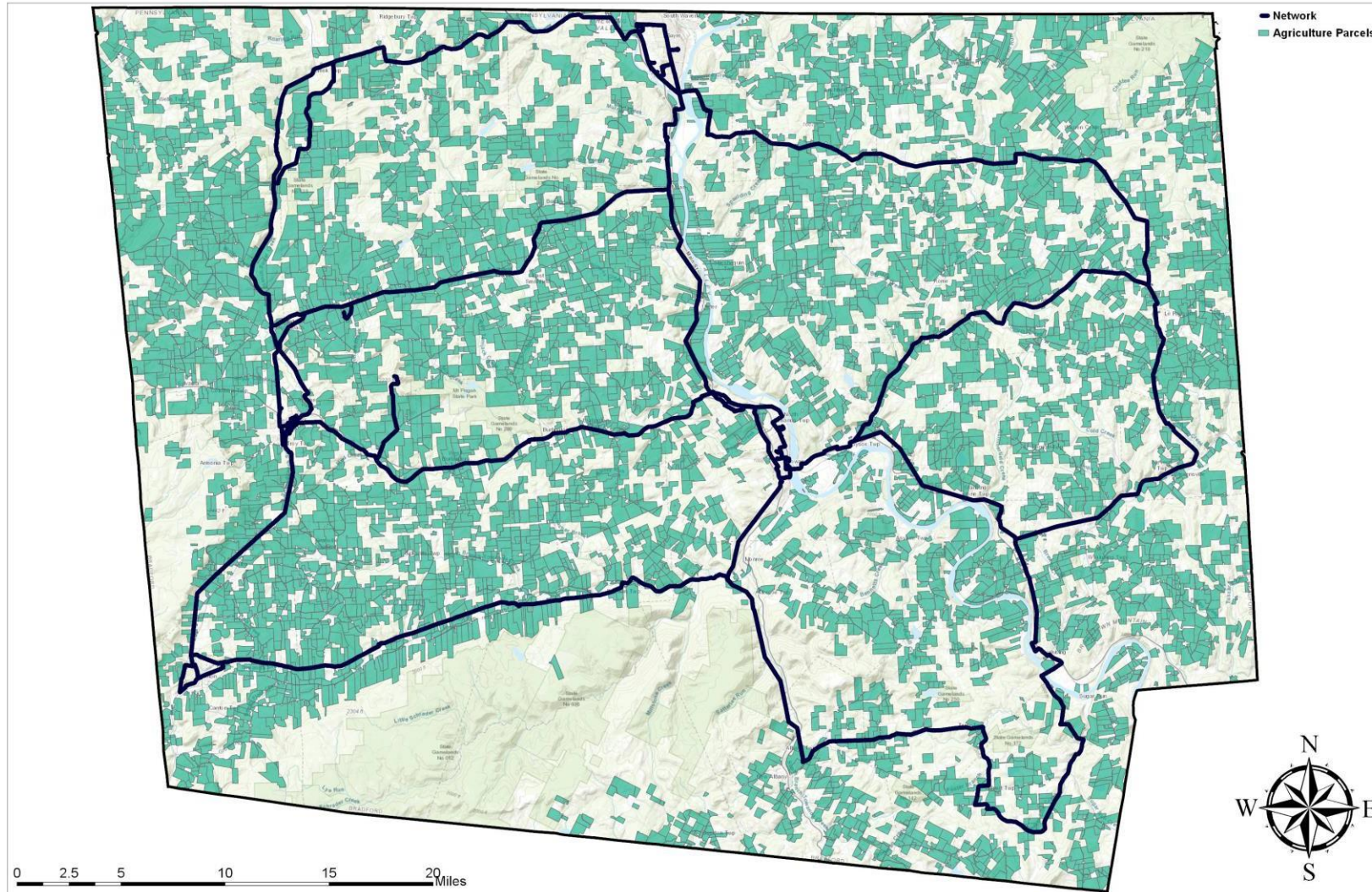
GATES LAW OFFICE PLLC

School Districts



GATES LAW OFFICE PLLC

Agricultural Parcels



GATES LAW OFFICE PLLC

Keys to the Network's Success

1. Funding from the Bradford County Commissioners
2. Redundant plan configuration with advantageous routes planned through low traffic utility poles and close to key facilities
3. Advantageous pole attachment arrangements to keep make-ready costs lower
4. Utilizing our local resources for Low-Cost Construction



GATES LAW OFFICE PLLC

Discussions



GATES LAW OFFICE PLLC

